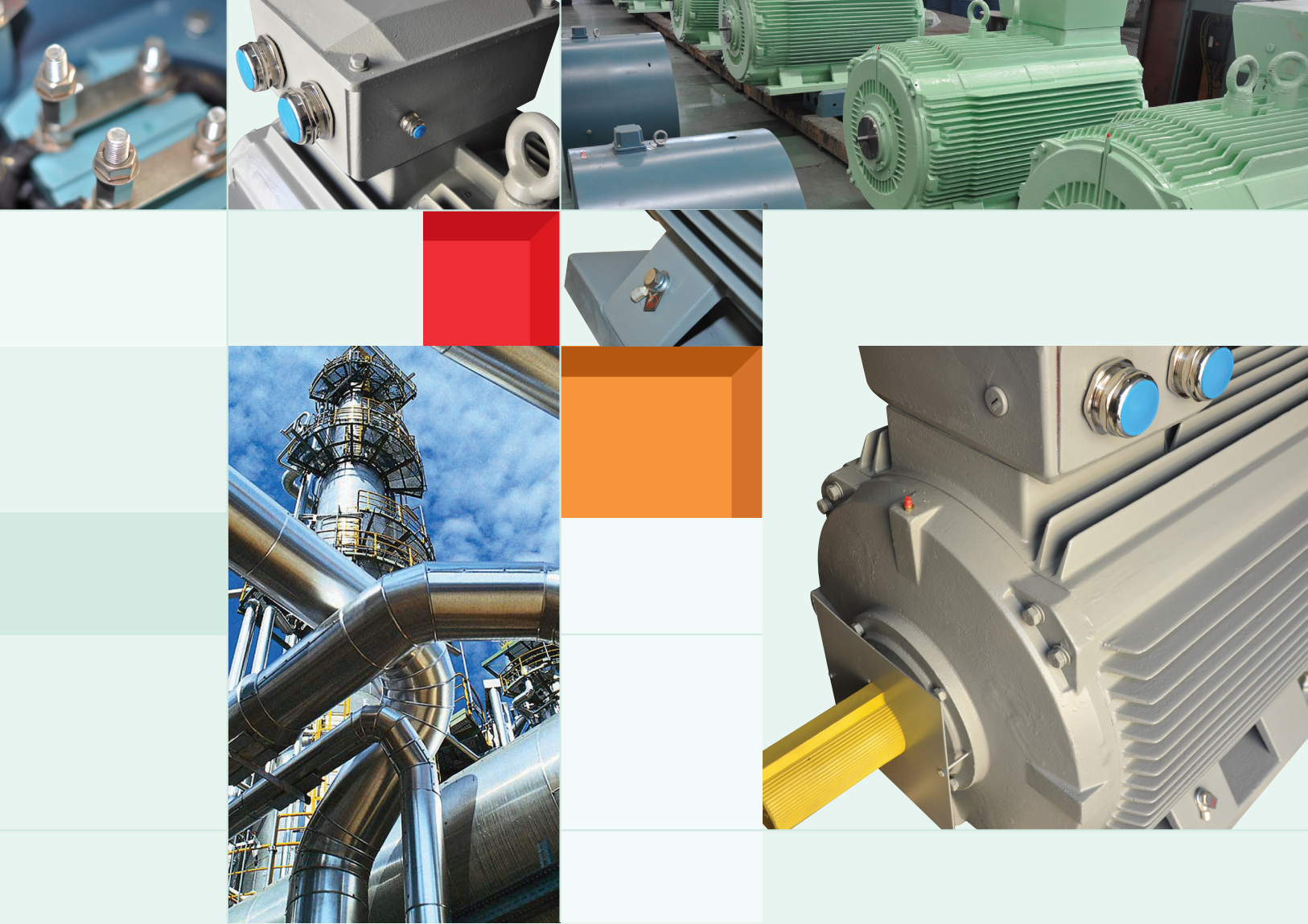


AC Motors

 **elektromer**

IE3 Series



MERKEZ MOTOR
MAKİNA SAN. VE TİC. A.Ş.

EC DECLARATION OF CONFORMITY

THE MANUFACTURER

ELEKTROMER

Merkez Motor Makina San. Ve Tic. A.Ş.

Park Sk. No:11 34035 Bayrampaşa / İstanbul - TURKEY

hereby declares that

THE PRODUCTS

56-355 Frame Three-Phase Induction Motors

56-112 Frame Single-Phase Induction Motors

complies with the requirements of the following harmonised standards:

IEC 60072-1, EN 60034-1:2010+AC:2010, EN 60204-1:2006/A1:2009,
EN 61000-3-2:2006, EN 61000-3-3:1995/A2:2005

which give presumption of conformity with essential requirements of

LOW VOLTAGE DIRECTIVE 2006/95/EC

EMC DIRECTIVE 2004/108/EC

ADDITIONAL INFORMATION

By design, the motors, considered as components, comply with the requirements of **Machinery Directive 2006/42/EC**, provided that the motors are installed, operated and maintained in accordance with our instructions.

The motors above must not be put into service until the relevant machinery into which they have been incorporated has been declared in conformity with the provisions of Machinery Directive

Years of CE marking : 2012

Sign



Signed by : M.Sc.Elec.Eng.OSMAN ULUSOY

Position : Technical Director

Date : 18.09.2012

IE3 Serisi Yüksek Verimli Motorlar YE3 Series Ultra High Performance Motor

IEC Serisi yüksek verimli 3 fazlı endüksiyon motorları, tam kapalı ve sincap kafesli olup, daha fazla verim için farklı malzeme ve teknoloji kullanılmıştır.

IEC Serisi ürün gamı H80-H355, çıkış güçleri 0,75 kW'dan 375 kW'a kadar 2,4,6 kutuplarda IP55 izolasyon sınıfında, soğutma methodu IC 411, ölçüleri IEC standartlara uygun, 380-400 Volt, 50Hz, ortam sıcaklığı 40°C max., yükseklik 1000m ve sürekli çalışma (S1) uygundur.

IE3 Serisi motor verimleri IEC 60034-30 standart IEC değerlerine uygundur.

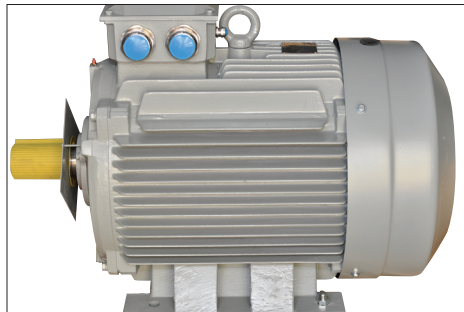
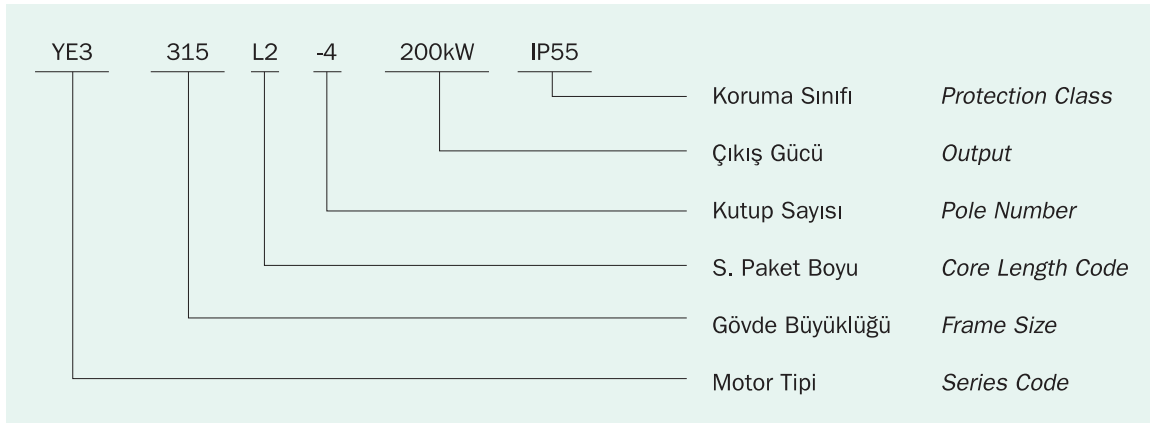
The YE3 series high efficiency standard three phase induction motors are totally enclosed fan cooled squirrel cage motor that are manufactured with new material and technology. It is a new generation motor and can save energy.

YE3 series motors center height: H80-H355, Output: 0.75-375kW, pole: 2,4,6, Degree of protection: IP55, cooling method: IC411, Mounting dimensions conform to IEC standard, Rated Voltage: 380V, 400V, Rated frequency: 50Hz, Ambient temperature: 40°C max, Altitude: 1000m, Duty: continuous (S1).

YE3 series high efficiency three phase induction motors have some notable advantages such as high efficiency, good starting performance, low noise, improved structure, improved cooling capabilities, This series motors are three phase induction motors which can be used for general motors and can be used to drive all kinds of general purpose machines such as compressors, ventilators, pumps ect. Other uses such as petrol chemical, medical, chemical industries and mining. For special requirements please contact our sales department.

The series motor efficiency indicators in line with the 2 value and GB18613-2012 value in IEC60034-30 standard IE3.

Motor Tip Kodları Meaning Of Type Code



Yapı Şekilleri Mounting Arrangements

5 Farklı Yapı Şekli Vardır.

B3 : Ayaklı Kapaklı

B5 : Ayaksız, Flaşlı (Delikli)

B35 : Ayaksız, Flaşlı (Delikli)

B34 : Gövde Ayaklı, Flaşlı (Vida Delikli)

B14 : Gövde Ayaksız, Flaşlı (Vida Delikli)

There are five basic constructional mounting arrangements for series Y2 motors:

B3 : Frame with feet, end bracket without flange

B5 : Frame without feet, end bracket with flange (With Holes)

B35 : Frame with feet, end bracket with flange (With Holes)

B34 : Frame with feet, end bracket with flange (With Screw Holes)

B14 : Frame without feet, end bracket with flange (With Screw Holes)

Yapı Şekilleri Gövde Büyüklükleri Tablosu²

The Commonly Used Mounting Arrangements and The Corresponding Frame Numbers are Shown in Table²

Yapı Şekli Basical	B3						B34	B14			B5			B35		
Tip / Code	B3	B6	B7	B8	V5	V6	B34	B14	B18	B5	V1	V3	B35	V15	V36	
Şema Sketch																
Tip / Code	80-355	80-160						80-112			80-112	80-355	80-160	80-355	80-160	

Rulmanlar Bearings

Gövde Büyüklüğü Frame No.	Mil Tarafı / Driving End				Fan Tarafı / Non-Driving End			
	2 Kutup	2 Poles	4.6 Kutup	4.6 Poles	2 Kutup	2 Poles	4.6 Kutup	4.6 Poles
80	6204-2RS/C3				6204-2RS/C3			
90	6205-2RS/C3				6205-2RS/C3			
100	6206-2RS/C3				6206-2RS/C3			
112	6206-2RS/C3				6206-2RS/C3			
132	6208-2RS/C3				6208-2RS/C3			
160	6309/C3				6309/C3			
180	6311/C3				6311/C3			
200	6312/C3				6312/C3			
225	6312/C3		6313/C3		6312/C3		6313/C3	
250	6314/C3		6314/C3		6314/C3		6314/C3	
280	6316/C3		6316/C3		6316/C3		6316/C3	
315	6316/C3		6319/C3		6316/C3		6319/C3	
355	6319/C3		6322/C3		6319/C3		6322/C3	

Vibrasyon Vibration

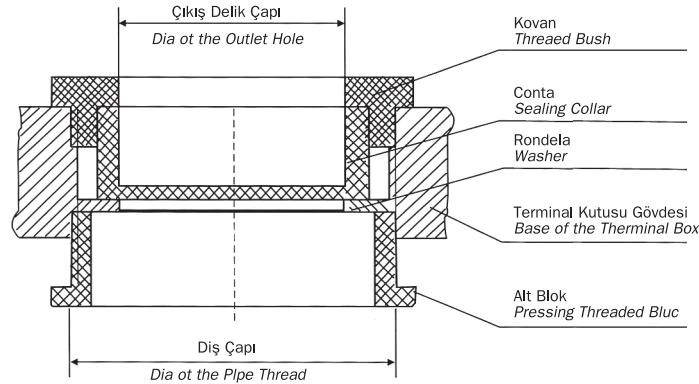
Tablo 4'de boştaki motor vibrasyon sınır değerleri verilmiştir.

Valid values measured motor at no-load speed (i.e. vibration limit value) does not exceed the table values listed in 4.

Gövde Büyüklüğü / Frame No.	≤132			>132~225			>225~355		
Yerleşme Şekli Installation	Sapma Displacement µm	Hız Speed mm/s	İvme Acceleration m/s ²	Sapma Displacement µm	Hız Speed mm/s	İvme Acceleration m/s ²	Sapma Displacement µm	Hız Speed mm/s	İvme Acceleration m/s ²
Serbest Salımlı Free Suspension	25	1.6	2.5	35	2.2	3.5	45	2.8	4.4
Rijit Bağlantılı Rigid Mounting	21	1.3	2.0	29	1.8	2.8	37	2.3	3.6

Normalde gövdenin üst tarafındadır. Siparişle sağ-sol tarafada alınabilir. Enerji kablosu 4 ayrı istikamete gidebilir. Rakor bağlantı şeması şekilde görülmektedir.

The normal position of the terminal box is on the top side when looking at the driving end of the motor, but may be arranged on the left-hand side or on the right-hand if specified when ordering. The power cable can be led out through the outlet of the terminal box in four directions, there is a sealing construction at the outlet (for details, see figure)



Çıkış delikleri ve boru çapları (gövde büyüklüğüne göre)

The diameters of the outlet holes and the pipe threads for the frame number are as shown in table5

Gövde Büyüklüğü Frame No.	Boru Diş Çapı Dia Of The Pipe Thread (mm)	
YE3-80-90	M25X1.5	
YE3-100	M32X1.5	
YE3-112-132	2-M32X1.5	
YE3-160-180	2-M40X1.5	M16X1.5
YE3-200-225	2-M50X1.5	M16X1.5
YE3-250-280	2-M63X1.5	M20X1.5
YE3-315	2-M63X1.5	M20X1.5
YE3-355	2-M63X1.5	M20X1.5

TEKNİKSEL ÖZELLİKLER
3000 DEVİR/DAK. 2-KUTUP, 50HZ

TECHNICAL DATA
SPEED 3000RPM 2-POLE 50HZ

Tip Type	Güç / Output		Hız Speed r/min	Akım In A		Frekans Frequency HZ	Verim Efficiency η % 100%	Güç Faktörü Power Factor Cos	Moment TN Nm	Tst TN	Tmax TN	Ist IN	Moment (J) kgm ²	Ses Seviyesi Noise LwdB(A)	Ağırlık Weight kg
	kW	HP		380V	400V										
YE3-80M1-2	0.75	1	2885	1.7	1.6	50	80.7	0.82	2.48	2.3	2.3	7.0	0.0010	62	15
YE3-80M2-2	1.1	1.5	2885	2.4	2.3	50	82.7	0.83	3.64	2.2	2.3	7.3	0.0013	62	18
YE3-90S-2	1.5	2	2895	3.2	3.0	50	84.2	0.84	4.95	2.2	2.3	7.6	0.0021	67	23
YE3-90L-2	2.2	3	2900	4.6	4.4	50	85.9	0.85	7.24	2.2	2.3	7.6	0.0028	67	28
YE3-100L-2	3	4	2890	6.0	5.7	50	87.1	0.87	9.91	2.2	2.3	7.8	0.0046	74	39
YE3-112M-2	4	5.5	2900	7.8	7.4	50	88.1	0.88	13.17	2.2	2.3	8.3	0.0074	77	49
YE3-132S1-2	5.5	7.5	2925	10.6	10.1	50	89.2	0.88	17.96	2.0	2.3	8.3	0.0145	79	68
YE3-132S2-2	7.5	10	2925	14.4	13.7	50	90.1	0.88	24.49	2.0	2.3	7.9	0.0176	79	75
YE3-160M1-2	11	15	2945	20.6	19.6	50	91.2	0.89	35.67	2.0	2.3	8.1	0.0513	81	130
YE3-160M2-2	15	20	2950	27.9	26.5	50	91.9	0.89	48.56	2.0	2.3	8.1	0.0654	81	132
YE3-160L-2	18.5	25	2945	34.2	32.5	50	92.4	0.89	59.99	2.0	2.3	8.2	0.0760	81	151
YE3-180M-2	22	30	2955	40.5	38.5	50	92.7	0.89	71.1	2.0	2.3	8.2	0.1183	83	209.5
YE3-200L1-2	30	40	2965	54.9	52.2	50	93.3	0.89	96.63	2.0	2.3	7.6	0.1649	84	246
YE3-200L2-2	37	50	2965	67.4	64.0	50	93.7	0.89	119.17	2.0	2.3	7.6	0.1945	84	265
YE3-225M-2	45	60	2965	80.8	76.8	50	94.0	0.90	144.94	2.0	2.3	7.7	0.3097	86	345
YE3-250M-2	55	75	2970	98.5	93.6	50	94.3	0.90	176.85	2.0	2.3	7.7	0.4168	89	422
YE3-280S-2	75	100	2975	133.7	127.0	50	94.7	0.90	240.76	1.8	2.3	7.1	0.6849	91	527
YE3-280M-2	90	125	2975	159.9	151.9	50	95.0	0.90	288.91	1.8	2.3	7.1	0.8015	91	578
YE3-315S-2	110	150	2980	195.1	185.3	50	95.2	0.90	352.52	1.8	2.3	7.1	1.5305	92	957
YE3-315M-2	132	180	2975	233.6	221.9	50	95.4	0.90	423.73	1.8	2.3	7.1	1.7253	92	987
YE3-315L1-2	160	220	2975	279.4	265.4	50	95.6	0.91	513.61	1.8	2.3	7.2	2.0592	92	1153
YE3-315L2-2	200	270	2975	348.6	331.2	50	95.8	0.91	642.02	1.8	2.2	7.2	2.5045	92	1347
YE3-355M-2	250	340	2980	435.7	413.9	50	95.8	0.91	801.17	1.8	2.2	7.2	3.1254	100	1655
YE3-355L-2	315	430	2980	543.0	515.9	50	95.8	0.91	1009.48	1.8	2.2	7.2	3.7504	100	1838

TEKNİKSEL ÖZELLİKLER
1500 DEVİR/DAK. 4-KUTUP, 50HZ
TECHNICAL DATA
SPEED 1500RPM 4-POLE 50HZ

Tip Type	Güç / Output		Hız Speed r/min	Akım In A		Frekans Frequency HZ	Verim Efficiency η % 100%	Güç Faktörü Power Factor Cos	Moment TN Nm	Tst TN	Tmax TN	Ist IN	Moment (J) kgm ²	Ses Seviyesi Noise LwdB(A)	Ağırlık Weight kg
	kW	HP		380V	400V										
YE3-80m2-4	0.75	1	1435	1.8	1.7	50	82.5	0.75	4.99	2.3	2.3	6.6	0.0023	56	19
YE3-90S-4	1.1	1.5	1435	2.6	2.5	50	84.1	0.76	7.32	2.3	2.3	6.8	0.0037	59	24
YE3-90L-4	1.5	2	1435	3.5	3.3	50	85.3	0.77	9.98	2.3	2.3	7.0	0.0048	59	29
YE3-100L1-4	2.2	3	1450	4.8	4.6	50	86.7	0.81	14.49	2.3	2.3	7.6	0.0090	64	37
YE3-100L2-4	3	4	1450	6.3	6.0	50	87.7	0.82	19.76	2.3	2.3	7.6	0.0120	64	41
YE3-112M-4	4	5.5	1455	8.4	8.0	50	88.6	0.82	26.25	2.2	2.3	7.8	0.0175	65	53
YE3-132S-4	5.5	7.5	1460	11.2	10.6	50	89.6	0.83	35.98	2.0	2.3	7.9	0.0350	71	69
YE3-132M-4	7.5	10	1460	15.0	14.3	50	90.4	0.84	49.06	2.0	2.3	7.5	0.0447	71	81
YE3-160M-4	11	15	1470	21.5	20.4	50	91.4	0.85	71.46	2.2	2.3	7.7	0.0974	73	126
YE3-160L-4	15	20	1470	28.8	27.4	50	92.1	0.86	97.12	2.2	2.3	7.8	0.1239	73	147
YE3-180M-4	18.5	25	1475	35.3	33.5	50	92.6	0.86	119.78	2.0	2.3	7.8	0.1811	76	203
YE3-180L-4	22	30	1475	41.8	39.7	50	93.0	0.86	142.44	2.0	2.3	7.8	0.2242	76	227
YE3-200L-4	30	40	1475	56.6	53.8	50	93.6	0.86	194.24	2.0	2.3	7.3	0.3631	76	290
YE3-225S-4	37	50	1480	69.6	66.1	50	93.9	0.86	238.75	2.0	2.3	7.4	0.5589	78	332
YE3-225M-4	45	60	1480	84.4	80.2	50	94.2	0.86	290.37	2.0	2.3	7.4	0.6351	78	353
YE3-250M-4	55	75	1485	102.7	97.6	50	94.6	0.86	353.7	2.2	2.3	7.4	0.8994	79	476
YE3-280S-4	75	100	1485	163.3	129.5	50	95.0	0.88	482.32	2.0	2.3	6.9	1.6251	80	615
YE3-280M-4	90	125	1485	163.2	155.0	50	95.2	0.88	578.79	2.0	2.3	9.9	1.9672	80	675
YE3-315S-4	110	150	1485	196.8	187.0	50	95.4	0.89	707.41	2.0	2.1	7.0	3.2735	88	1012
YE3-315M-4	132	180	1485	235.7	223.9	50	95.6	0.89	848.89	2.0	2.1	7.0	3.6959	88	1061
YE3-315L1-4	160	220	1485	285.1	270.8	50	95.8	0.89	1028.96	2.0	2.1	7.1	4.2239	88	1153
YE3-315L2-4	200	270	1485	351.7	334.1	50	96.0	0.90	1286.2	2.0	2.1	7.1	5.9135	88	1603
YE3-355M-4	250	340	1490	439.6	417.6	50	96.0	0.90	1602.35	2.0	2.1	7.1	9.6762	95	1933
YE3-355L-4	315	430	1490	553.9	526.2	50	96.0	0.90	2018.96	2.0	2.1	7.1	10.5721	95	1933
YE3-3551-4	355	475	1490	638.5	606.5	50	96.0	0.88	2260.2	1.7	2.1	7.0		102	
YE3-3552-4	375	500	1490	674.4	640.7	50	96.0	0.88	2387.5	1.7	2.1	7.0		102	

TEKNİKSEL ÖZELLİKLER
1000 DEVİR/DAK. 6-KUTUP, 50HZ

TECHNICAL DATA
SPEED 1000RPM 6-POLE 50HZ

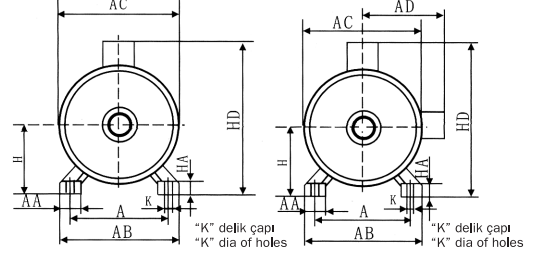
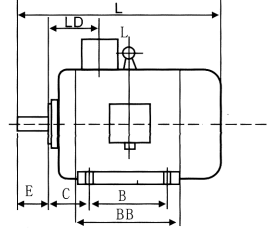
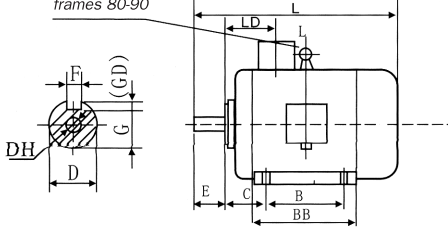
Tip Type	Güç / Output		Hız Speed r/min	Akım In A		Frekans Frequency HZ	Verim Efficiency η % 100%	Güç Faktörü Power Factor Cos	Moment TN Nm	Tst TN	Tmax TN	Ist IN	Moment (J) kgm ²	Ses Seviyesi Noise LwdB(A)	Ağırlık Weight kg
	kW	HP		380V	400V										
YE3-90S-6	0.75	1	955	2.0	1.9	50	78.9	0.71	7.50	2.0	2.1	6.0	0.0048	57	25
YE3-90L-6	1.1	1.5	955	2.8	2.7	50	81.0	0.73	11.0	2.0	2.1	6.0	0.0071	57	30
YE3-100L-6	1.5	2	955	3.8	3.6	50	82.5	0.73	15.0	2.0	2.1	6.5	0.0126	61	38
YE3-112M-6	2.2	3	950	5.4	5.1	50	84.3	0.74	22.12	2.0	2.1	6.6	0.0191	65	48
YE3-132S-6	3	4	970	7.2	6.8	50	85.6	0.74	29.54	2.0	2.1	6.8	0.0357	69	64
YE3-132M1-6	4	5.5	970	9.5	9.0	50	86.8	0.74	39.38	2.0	2.1	6.8	0.0477	69	75
YE3-132M2-6	5.5	7.5	970	12.7	12.1	50	88.0	0.75	54.15	2.0	2.1	7.0	0.0630	69	85
YE3-160M-6	7.5	10	975	16.2	15.4	50	89.1	0.79	73.46	2.0	2.1	7.0	0.1119	73	115
YE3-160L-6	11	15	975	23.1	21.9	50	90.3	0.80	107.74	2.0	2.1	7.2	0.1492	73	135
YE3-180L-6	15	20	980	30.9	29.4	50	91.2	0.81	146.17	2.0	2.1	7.3	0.2574	73	186
YE3-200L1-6	18.5	25	980	37.8	35.9	50	91.7	0.81	180.28	2.0	2.1	7.3	0.3881	73	236
YE3-200L2-6	22	30	980	44.8	42.6	50	92.2	0.81	214.39	2.0	2.1	7.4	0.4478	73	254
YE3-225M-6	30	40	985	59.1	56.1	50	92.9	0.83	290.86	2.0	2.1	6.9	0.642	74	297.5
YE3-250M-6	37	50	985	71.7	68.1	50	93.3	0.84	358.73	2.0	2.1	7.1	1.0787	76	371
YE3-280S-6	45	60	985	85.8	81.5	50	93.7	0.85	436.29	2.0	2.0	7.2	1.7050	78	518
YE3-280M-6	55	75	985	103.3	98.1	50	94.1	0.86	533.25	2.0	2.0	7.3	2.0619	78	670
YE3-315S-6	75	100	990	143.4	136.2	50	94.6	0.84	723.48	2.0	2.0	6.6	3.9210	83	877
YE3-315M-6	90	125	990	169.5	161.0	50	94.9	0.85	868.18	2.0	2.0	6.7	4.2711	83	1008
YE3-315L1-6	110	150	990	206.8	196.5	50	95.1	0.85	1061.11	2.0	2.0	6.7	5.4614	83	1057
YE3-315L2-6	132	180	990	244.4	232.2	50	95.4	0.86	1273.33	2.0	2.0	6.8	6.5817	83	1161
YE3-355M1-6	160	220	990	295.7	280.9	50	95.6	0.86	1543.43	1.8	2.0	6.8	10.3039	85	1798
YE3-355M2-6	200	270	990	364.6	346.4	50	95.8	0.87	1929.29	1.8	2.0	6.8	11.7758	85	1854
YE3-355L-6	250	340	990	455.7	432.9	50	95.8	0.87	2411.62	1.8	2.0	6.8	15.2860	85	2176
YE3-3552-6	315	355	990	580.9	551.9	50	95.8	0.86	3008.25	1.8	2.0	6.8		91	



BOYUTLAR IM B3 H80-355

MOUNTING AND OVERALL DIMENSIONS IM B3 H80-355

Kaldırma halkaları
80-90 gövdelerde yoktur
80-90 NO.eyebolt for
frames 80-90



Gövde Büyüklüğü 80-132
Frame Size 80-132

Gövde Büyüklüğü 160-355
Frame Size 160-355

Gövde Büyüklüğü 80-355
Frame Size 80-355

Tip Type	Kutup Poles	Ölçüler mm / Dimensions in mm																		
		A	AA	B	C	D*	E	F	G	H	K	AB	AC	AD	HD	L	BB	HA	LD	(DH)*
YE3-80	2.4.6	125	34	100	50	19	40	6	15.5	80	10	165	167	165	245	300	142	10	74	M6X16
YE3-90S	2.4.6	140	36	100	56	24	50	8	20	90	10	180	190	175	265	355	180	12	76	M8X19
YE3-90L	2.4.6	140	36	125	56	24	50	8	20	90	10	180	190	175	265	385	220	12	76	M8X19
YE3-100L	2.4.6	160	40	140	63	28	60	8	24	100	12	205	215	200	290	435	233	14	83	M10X22
YE3-112M	2.4.6	190	45	140	70	28	60	8	24	112	12	230	240	220	325	468	248	15	87	M10X22
YE3-132S	2.4.6	216	55	140	89	38	80	10	33	132	12	270	275	240	365	510	230	18	102	M12X28
YE3-132M	2.4.6	216	55	178	89	38	80	10	33	132	12	270	275	240	365	548	262	18	102	M12X25
YE3-160M	2.4.6	254	65	210	108	42	110	12	37	160	14.5	320	320	285	440	675	304	20	149	M16X36
YE3-160L	2.4.6	254	65	254	108	42	110	12	37	160	14.5	320	320	285	440	705	334	20	149	M16X36
YE3-180M	2.4.6	279	70	241	121	48	110	14	42.5	180	14.5	355	380	310	470	740	355	22	161	M16X36
YE3-180L	2.4.6	279	70	279	121	48	110	14	42.5	180	14.5	355	380	310	470	788	397	22	161	M16X36
YE3-200L	2.4.6	318	70	305	133	55	110	16	49	200	18.5	395	410	335	525	775	375	25	186	M16X36
YE3-225S	4.6	356	75	286	149	60	140	18	53	225	18.5	435	470	370	580	820	370	28	189	M16X36
YE3-225M	2	356	75	311	149	55	110	16	49	225	18.5	435	470	370	580	815	395	28	189	M16X36
	4.6	356	75	311	149	60	140	18	53	225	18.5	435	470	370	580	845	395	28	189	M20X42
YE3-250M	2	406	80	349	168	60	140	18	53	250	24	490	490	380	635	930	445	30	207	M20X42
	4.6	406	80	349	168	65	140	18	58	250	24	490	490	380	635	930	445	30	207	M20X42
YE3-280S	2	457	85	368	190	65	140	18	58	280	24	550	580	410	698	981	490	35	215	M20X42
	4.6	457	85	368	190	75	140	20	67.5	280	24	550	580	410	698	981	490	35	215	M20X42
YE3-280M	2	457	85	419	190	65	140	18	58	280	24	550	580	410	698	1032	540	35	215	M20X42
	4.6	457	85	419	190	75	140	20	67.5	280	24	550	580	410	698	1032	540	35	215	M20X42
YE3-315S	2	508	120	406	216	65	140	18	58	315	28	630	645	535	885	1185	570	45	257	M20X42
	4.6	508	120	406	216	85	170	22	71	315	28	630	645	535	885	1215	570	45	257	M20X42
YE3-315M	2	508	120	457	216	65	140	18	58	315	28	630	645	353	885	1259	680	45	257	M20X42
	4.6	508	120	457	216	85	170	22	71	315	28	630	645	353	885	1325	680	45	257	M20X42
YE3-315L1	2	508	120	508	216	65	140	18	58	315	28	630	645	535	885	1295	680	45	257	M20X42
	4.6	508	120	508	216	85	170	22	71	315	28	630	645	535	885	1325	680	45	257	M20X42
YE3-315L2	2	508	120	508	216	65	140	18	58	315	28	630	645	535	885	1445	680	45	257	M20X42
	4	508	120	508	216	85	170	22	71	315	28	630	645	535	885	1475	680	45	257	M20X42
YE3-355M	2	610	120	560	254	75	140	20	67.5	355	28	730	720	620	1065	1495	760	52	284	M20X42
	4.6	610	120	560	254	95	170	25	86	355	28	730	720	650	1065	1525	760	52	284	M20X42
YE3-355L	2	610	120	630	254	75	140	20	67.5	355	28	730	720	650	1065	1495	760	52	284	M20X42
	4.6	610	120	630	254	95	170	25	86	355	28	730	720	650	1065	1525	760	52	284	M24X47
YE3-3551	2	630	135	800	224	80	170	22	71	355	35	760	900	760	1130	1870	1140	52	318	M20X42
YE3-3552	4.6					110	210	28	100							1920				M24X47

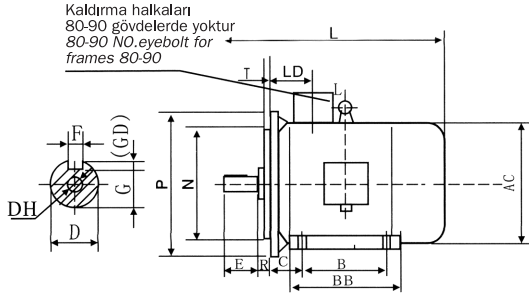
Not: "DH" ölçüleri talep üzerine verilir. "D" ölçüsü toleransları: 19-28 çaplar için J6, 36-48 çaplar için K6, 55-80 çaplar için M6, 95 çap için M6 olarak verilmiştir.

Notet: DH dimension is only required for exported motor. For domestic customers, it should be prepared according to the order requirement.

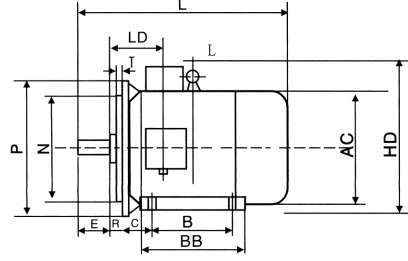
Tolerance for D dimensions: J6 for ø 19-28; K6 for ø 38-48; m6 for ø 55-80; for ø 95.

**BOYUTLAR
IM B35 H80-355**

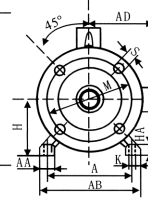
**MOUNTING AND OVERALL DIMENSIONS
IM B35 H80-355**



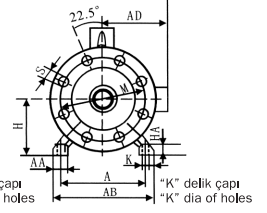
Gövde Büyüklüğü 80-132
Frame Size 80-132



Gövde Büyüklüğü 160-355
Frame Size 160-355



Gövde Büyüklüğü 80-200
Frame Size 80-200

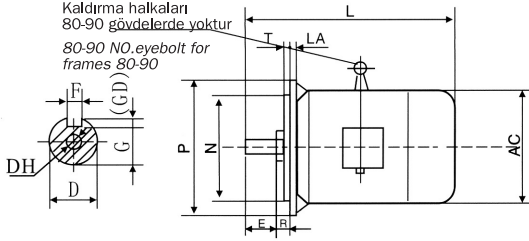
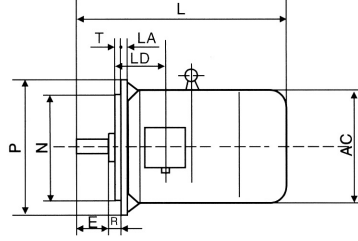
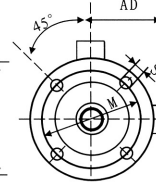
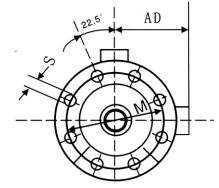


Gövde Büyüklüğü 225-355
Frame Size 225-355

Tip Type	Flanş No. Flange No.	Kutup Poles	Ölçüler mm / Dimensions in mm																									
			A	AA	B	C	D*	E	F	G	H	K	AB	AC	AD	HD	L	BB	HA	LD	Flange Holes	M	N	P	R*	S	T	(DH)*
YE3-80	FF165	2.4.6	125	34	100	50	19	40	6	15.5	80	10	165	167	165	245	300	142	10	74	4	165	130	200	0	12	3.5	M6X16
YE3-90S	FF165	2.4.6	140	36	100	56	24	50	8	20	90	10	180	190	175	265	355	180	12	76	4	165	130	200	0	12	3.5	M8X19
YE3-90L	FF165	2.4.6	140	36	125	56	24	50	8	20	90	10	180	190	175	265	385	220	12	76	4	165	130	200	0	12	3.5	M8X19
YE3-100L	FF215	2.4.6	160	40	140	63	28	60	8	24	100	12	205	215	200	290	435	233	14	83	4	215	180	250	0	14.5	4	M10X22
YE3-112M	FF215	2.4.6	190	45	140	70	28	60	8	24	112	12	230	240	220	325	468	248	15	87	4	215	180	250	0	14.5	4	M10X22
YE3-132S	FF265	2.4.6	216	55	140	89	38	80	10	33	132	12	270	275	240	365	510	230	18	102	4	265	230	300	0	14.5	4	M12X28
YE3-132M	FF265	2.4.6	216	55	178	89	38	80	10	33	132	12	270	275	240	365	548	262	18	102	4	265	230	300	0	14.5	4	M12X28
YE3-160M	FF300	2.4.6	254	65	210	108	42	110	12	37	160	14.5	320	320	285	440	675	304	20	149	4	300	250	350	0	18.5	5	M16X36
YE3-160L	FF300	2.4.6	254	65	254	108	42	110	12	37	160	14.5	320	320	285	440	705	334	20	149	4	300	250	350	0	18.5	5	M16X36
YE3-180M	FF300	2.4.6	279	70	241	121	48	110	14	42.5	180	14.5	355	380	310	470	740	355	22	161	4	300	250	350	0	18.5	5	M16X36
YE3-180L	FF300	2.4.6	279	70	279	121	48	110	14	42.5	180	14.5	355	380	310	470	788	397	22	161	4	300	250	350	0	18.5	5	M16X36
YE3-200L	FF350	2.4.6	318	70	305	133	55	110	16	49	200	18.5	395	410	335	525	775	375	25	186	4	350	300	400	0	18.5	5	M20X42
YE3-225S	FF400	4.6	356	75	286	149	60	140	18	53	225	18.5	435	470	370	580	820	370	28	189	8	400	350	450	0	18.5	5	M20X42
YE3-225M	FF400	2	356	75	311	149	55	110	16	49	225	18.5	435	470	370	580	815	395	28	189	8	400	350	450	0	18.5	5	M20X42
	FF400	4.6	356	75	311	149	60	140	18	53	225	18.5	435	470	370	580	845	395	28	189	8	400	350	450	0	18.5	5	M20X42
YE3-250M	FF500	2	406	80	349	168	60	140	18	53	250	24	490	490	380	635	90	445	30	207	8	500	450	550	0	18.5	5	M20X42
	FF500	4.6	406	80	349	168	65	140	18	58	250	24	490	490	380	635	930	445	30	207	8	500	450	550	0	18.5	5	M20X42
YE3-280S	FF500	2	457	85	368	190	65	140	18	58	280	24	550	580	410	698	981	490	35	215	8	500	450	550	0	18.5	5	M20X42
	FF500	4.6	457	85	368	190	75	140	20	67.5	280	24	550	580	410	698	981	490	35	215	8	500	450	550	0	18.5	5	M20X42
YE3-280M	FF500	2	457	85	419	190	65	140	18	58	280	24	550	580	410	698	1032	540	35	215	8	500	450	550	0	18.5	5	M20X42
	FF500	4.6	457	85	419	190	75	140	20	67.5	280	24	550	580	410	698	1032	540	35	215	8	500	450	550	0	18.5	5	M20X42
YE3-315S	FF600	2	508	120	406	216	65	140	18	58	315	28	630	645	535	885	1185	570	45	257	8	600	550	660	0	24	6	M20X42
	FF600	4.6	508	120	406	216	85	170	22	71	315	28	630	645	535	885	1215	570	45	257	8	600	550	660	0	24	6	M20X42
YE3-315M	FF600	2	508	120	457	216	65	140	18	58	315	28	630	645	535	885	1259	680	45	257	8	600	550	660	0	24	6	M20X42
	FF600	4.6	508	120	457	216	85	170	22	71	315	28	630	645	535	885	1325	680	45	257	8	600	550	660	0	24	6	M20X42
YE3-315L1	FF600	2	508	120	508	216	65	140	18	58	315	28	630	645	535	885	1259	680	45	257	8	600	550	660	0	24	6	M20X42
	FF600	4.6	508	120	508	216	85	170	22	71	315	28	630	645	535	885	1325	680	45	257	8	600	550	660	0	24	6	M20X42
YE3-315L2	FF600	2	508	120	508	216	65	140	18	58	315	28	630	645	535	885	1445	680	45	257	8	600	550	660	0	24	6	M20X42
	FF600	4	508	120	508	216	85	170	22	71	315	28	630	645	535	885	1475	680	45	257	8	600	550	660	0	24	6	M20X42
YE3-355M	FF740	2	610	120	560	254	75	140	20	67.5	355	28	730	720	650	1065	1495	760	52	284	8	740	680	800	0	24	6	M20X42
	FF740	4.6	610	120	560	254	95	170	25	86	355	28	730	720	650	1065	1525	760	52	284	8	740	680	800	0	24	6	M20X47
YE3-355L	FF740	2	610	120	630	254	75	140	20	67.5	355	28	730	720	650	1065	1495	760	52	284	8	740	680	800	0	24	6	M20X42
	FF740	4.6	610	120	630	254	95	170	25	86	355	28	730	720	650	1065	1525	760	52	284	8	740	680	800	0	24	6	M20X47
YE3-355I	FF840	2	630	135	800	224	80	170	22	71	355	35	760	900	760	1130	1870	1140	52	318	8	840	780	900	0	24	6	M20X42
YE3-355J	FF840	4.6	630	135	800	224	110	210	28	100	355	35	760	900	760	1130	1920	1140	52	318	8	840	780	900	0	24	6	M20X47

Not: "D" ölçüsü toleransları; 19-28 çaplar için J6, 36-48 çaplar için K6, 55-80 çaplar için M6, 95 çap için M6, "N" ölçüsü toleransı J6

Notes: R means the distance from flange mounting interface surface to auxiliary shoulder. DH dimension is only required for exported motor. For domestic customers, it should be prepared according to the order requirement. Tolerance for D dimension: j6 for ø 19-28; K6 for ø 38-48; m6 for ø 55-80, m6 for ø 95.4 Tolerance for N dimension is j6.

**BOYUTLAR
IM B5 H80-280**
**MOUNTING AND OVERALL DIMENSIONS
IM B5 H80-280**

 Gövde Büyüklüğü 80-132
Frame Size 80-132

 Gövde Büyüklüğü 160-80
Frame Size 160-80

 Gövde Büyüklüğü 80-200
Frame Size 80-200

 Gövde Büyüklüğü 225-280
Frame Size 225-280

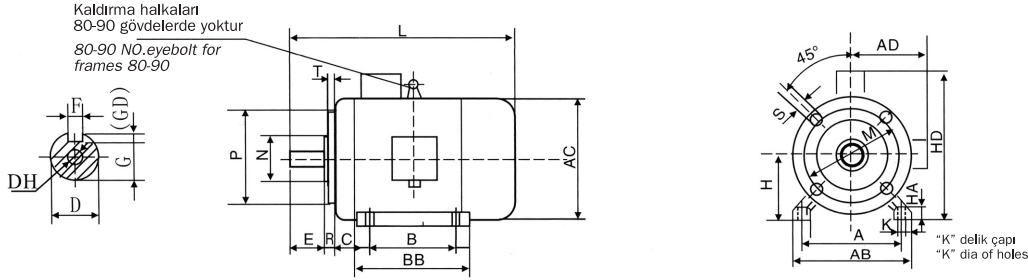
Tip Type	Flanş No. Flange No.	Kutup Poles	Ölçüler mm / Dimensions in mm															
			D*	E	F	G	M	N*	P	S	T	Flange Holes	AC	L	LD	LA	(DH)*	R
YE3-80	FF105	2.4.6	19	40	6	15.5	165	130	200	12	3.5	4	167	300	74	12	M6X16	0
YE3-90S	FF165	2.4.6	24	50	8	20	165	130	200	12	3.5	4	190	355	76.0	12	M8X19	0
YE3-90L	FF165	2.4.6	24	50	8	20	165	130	200	12	3.5	4	190	385	76.0	12	M8X19	0
YE3-100L	FF215	2.4.6	28	60	8	24	215	180	250	14.5	4	4	215	435	83	13	M10X22	0
YE3-112M	FF215	2.4.6	28	60	8	24	215	180	250	14.5	4	4	240	468	87	14	M10X22	0
YE3-132S	FF265	2.4.6	38	80	10	33	265	230	300	14.5	4	4	275	510	102	14	M12X28	0
YE3-132M	FF265	2.4.6	38	80	10	3	265	230	300	14.5	4	4	275	510	102	14	M12X28	0
YE3-160M	FF300	2.4.6	42	110	12	37	300	250	350	18.5	5	4	320	675	149	15	M16X36	0
YE3-160L	FF300	2.4.6	42	110	12	37	300	250	350	18.5	5	4	320	675	149	15	M16X36	0
YE3-180M	FF300	2.4.6	48	110	14	42.5	300	250	350	18.5	5	4	380	740	161	15	M16X36	0
YE3-180L	FF300	2.4.6	48	110	14	42.5	300	250	350	18.5	5	4	380	740	161	15	M16X36	0
YE3-200L	FF350	2.4.6	55	110	16	49	350	300	400	18.5	5	4	410	775	186	17	M20X42	0
YE3-225S	FF400	4.6	60	140	18	53	400	350	450	18.5	5	8	470	820	189	20	M20X42	0
YE3-225M	FF400	2	55	110	16	49	400	350	450	18.5	5	8	470	815	189	20	M20X42	0
	FF400	4.6	60	140	16	53	400	350	450	18.5	5	8	470	845	207	20	M20X42	0
YE3-250M	FF500	2	60	140	18	53	500	450	550	18.5	5	8	490	930	207	22	M20X42	0
	FF500	4.6	65	140	18	58	500	450	550	18.5	5	8	490	930	215	22	M20X42	0
YE3-280S	FF500	2	65	140	18	58	500	450	550	18.5	5	8	580	981	215	22	M20X42	0
	FF500	4.6	75	140	20	67.5	500	450	550	18.5	5	8	580	981	215	22	M20X42	0
YE3-280M	FF500	2	65	140	18	58	500	450	550	18.5	5	8	580	1032	215	22	M20X42	0
	FF500	4.6	75	140	20	67.5	500	450	550	18.5	5	8	580	1032	215	22	M20X42	0

Not: "D" ölçüsü toleransları; 19-28 çaplar için J6, 38-48 çaplar için K6, 55-80 çaplar için M6, 95 çap için M6,

Notes: R means the distance from flange mounting interface surface to auxiliary shoulder. DH dimension is only required for exported motor. For domestic customers, it should be prepared according to the order requirement. Tolerance for D dimension: j6 for ϕ 19-28; K6 for ϕ 38-48; m6 for ϕ 55-80, m6 for ϕ 95

**BOYUTLAR
IM B34 H80-112**

**MOUNTING AND OVERALL DIMENSIONS
IM B34 H80-112**

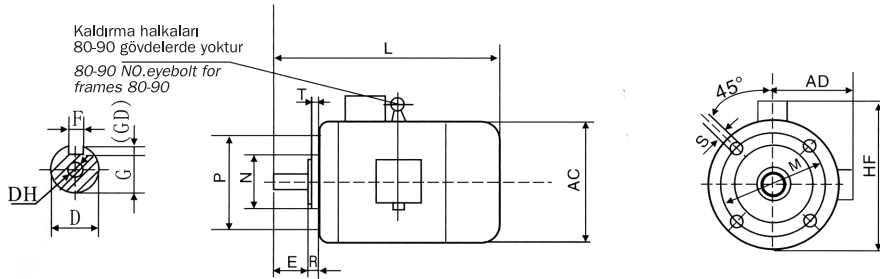


Tip Type	Kutup Poles	Ölçüler / Mounting Dimensions														Flanş Delikleri Flange Holes	Dış Ölçüler / Overall Dimensions						
		A	B	C	D*	E	F	G	H	K	M	N*	P	R	S		T	AB	AC	AD	HD	L	(DH)*
YE3-80	2. 4. 6	125	100	50	19	40	6	15.5	80	10	100	80	120	0	M6	3.0	4	165	167	165	245	300	M6X16
YE3-90S	2. 4. 6	140	100	56	24	50	8	20	90	10	115	95	140	0	M8	3.0	4	180	190	175	250	355	M8X19
YE3-90L	2. 4. 6	140	125	56	24	50	8	20	90	10	115	95	140	0	M8	3.0	4	180	190	175	250	385	M8X19
YE3-100L	2. 4. 6	160	140	63	28	60	8	24	100	12	130	110	160	0	M8	3.5	4	205	215	200	270	435	M10X22
YE3-112M	2. 4. 6	190	140	70	28	60	8	24	112	12	130	110	160	0	M8	3.5	4	230	240	220	325	468	M10X22

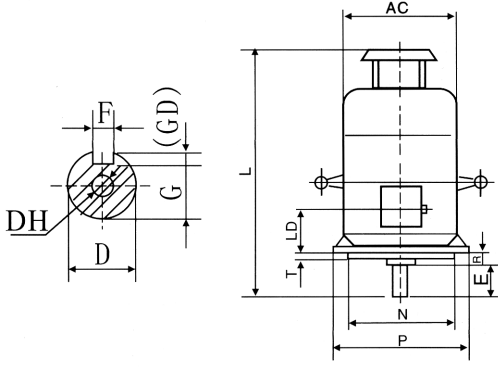
Not: "N" ölçüleri toleransı j6
Notes: Tolerance for N dimension is j6

**BOYUTLAR
IM B14 H80-112**

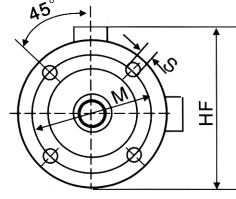
**MOUNTING AND OVERALL DIMENSIONS
IM B14 H80-112**



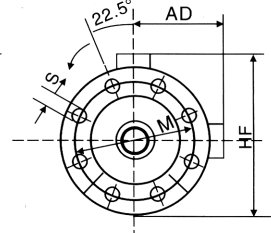
Tip Type	Kutup Poles	Ölçüler / Mounting Dimensions										Flanş Delikleri Flange Holes	Dış Ölçüler / Overall Dimensions				
		D*	E	F	G	P	M	N	R	S	T		AD	AC	HF	L	(DH)*
YE3-80	2. 4. 6	19	40	6	15.5	120	100	80	0	M6	3.0	4	165	167	230	300	M6X16
YE3-90S	2. 4. 6	24	50	8	20	140	115	95	0	M8	3.0	4	175	190	245	355	M8X19
YE3-90L	2. 4. 6	24	50	8	20	140	115	95	0	M8	3.0	4	175	190	245	385	M8X19
YE3-100L	2. 4. 6	28	60	8	24	160	130	110	0	M8	3.5	4	200	215	285	435	M10X22
YE3-112M	2. 4. 6	28	60	8	24	160	130	110	0	M8	3.5	4	220	240	320	468	M10X22

**BOYUTLAR
IMV1 H180-355**
**MOUNTING AND OVERALL DIMENSIONS
IMV1 H180-355**


Gövde Büyüklüğü 180-355
Frame Size 180-355



Gövde Büyüklüğü 180-200
Frame Size 180-200



Gövde Büyüklüğü 225-355
Frame Size 225-355

Gövde Büyüklüğü Frame Size	Kutup Poles	Ölçüler / Mounting Dimensions										Flanş Delikleri Flange Holes	Dış Ölçüler / Overall Dimensions				
		D*	E	F	G	M	N*	P	R	S	T		AC	AD	HF	L	(DH)*
YE2-180M	2.4.6	48	110	14	42.5	300	250	350	0	18.5	5	4	380	310	500	800	M16X36
YE2-180L	2.4.6	48	110	14	42.5	300	250	350	0	18.5	5	4	380	310	500	848	M16X36
YE2-200L	2.4.6	55	110	16	49	350	300	400	0	18.5	5	4	410	335	540	845	M20X42
YE2-225S	2.4.6	60	140	18	53	400	350	450	0	18.5	5	8	470	370	605	915	M20X42
YE2-225M	2	55	140	16	49	400	350	450	0	18.5	5	8	470	370	605	910	M20X42
	4.6	60	140	18	53	400	350	450	0	18.5	5	8	470	370	605	940	M20X42
YE2-250M	2	60	140	18	53	500	450	550	0	18.5	5	8	490	380	630	1035	M20X42
	4.6	65	140	18	58	500	450	550	0	18.5	5	8	490	380	630	1035	M20X42
YE2-280S	2	65	140	18	58	500	450	550	0	18.5	5	8	580	410	700	1115	M20X42
	4.6	75	140	20	67.5	500	450	550	0	18.5	5	8	580	410	700	115	M20X42
YE2-280M	2	65	140	18	58	500	450	550	0	18.5	5	8	580	410	700	1157	M20X42
	4.6	75	140	20	67.5	500	450	550	0	18.5	5	8	580	410	700	1157	M20X42
YE2-315S	2	65	140	18	58	600	550	660	0	24	6	8	645	535	858	1310	M20X42
	4.6	85	170	22	71	600	550	660	0	24	6	8	645	535	858	1340	M20X42
YE2-315M	2	65	140	18	58	600	550	660	0	24	6	8	645	535	858	1425	M20X42
	4.6	85	170	22	71	600	550	660	0	24	6	8	645	535	858	1450	M20X42
YE2-315L1	2	65	140	18	58	600	550	660	0	24	6	8	645	535	858	1425	M20X42
	4.6	85	170	22	71	600	550	660	0	24	6	8	645	535	858	1450	M20X42
YE2-315L2	2	65	140	18	58	600	550	660	0	24	6	8	645	535	858	1575	M20X42
	4	85	170	22	71	600	550	660	0	24	6	8	645	535	858	1600	M20X42
YE2-355M	2	75	140	20	67.5	740	680	800	0	24	6	8	720	650	1010	1640	M20X42
	4.6	95	170	25	86	740	680	800	0	24	6	8	720	650	1010	1670	M20X42
YE2-355L	2	75	140	20	67.5	740	680	800	0	24	6	8	720	650	1010	1640	M20X42
	4.6	95	170	25	86	740	680	800	0	24	6	8	720	650	1010	1670	M20X47
YE2-3551	2	80	170	22	71	800	780	900	0	24	6	8	900	760	1220	1920	M20X42
YE2-3552	4.6	110	210	28	100	800	780	900	0	24	6	8	900	760	1220	1970	M20X47


Not: "D" ölçüsü toleransları; 18-28 çaplar için J6, 36-48 çaplar için K6, 55-80 çaplar için M6, 95 çap için M6, "N" ölçüsü toleransı J6

Notes: R means the distance from flange mounting interface surface to auxiliary shoulder. DH dimension is only required for exported motor. For domestic customers, it should be prepared according to the order requirement. Tolerance for D dimension: j6 for ϕ 19-28; K6 for ϕ 38-48; m6 for ϕ 55-80, m6 for ϕ 95.4 Tolerance for N dimension is j6.

GL



VERIFICATION OF COMPLIANCE CERTIFICATE

Client :  **elektromer**

Manufacturer : Merkez Motor

Product Name : 56 -355 Frame Three-Phase Induction Motors
56 -112 Frame Single-Phase Induction Motors

Certificate No : PC-LVD/12.007.01

The equipment complies with the principal requirements of *Low Voltage Directive* as a based on voluntary test. This attestation applies only to sample of product providing to testing and verification at related test report.

Review of necessary technical documentation, EHSR and risk analysis as well as declaration of conformity and *CE marking* affixed on the label. Equipment is deemed to meet above the directives and standards and hence the requirements of;

2006/95/EC Low Voltage Directive

2004/108/EC Electromagnetic Compatibility Directive

EN 60034-1:2010+AC:2010, EN 60204-1:2006/A1:2009 Standards

Issue Place-Date

INSPECCO TURKEY
18.09.2012

Manufacturer

MERKEZ MOTOR MAK.
SAN. ve TİC. A.Ş.

Park Sk. No:11 34035
Bayrampaşa / İstanbul -
TURKEY

Approved by

Inspector to
Germanischer Lloyd
(Signature and Stamp)



 **elektromer**



MERKEZ MOTOR
MAKİNA SAN. VE TİC. A.Ş.

Merkez Motor Makina San. Ve Tic. A.Ş.
Terazidere Mah. Park Sk. No: 11 Bayrampaşa 34035 İSTANBUL
Tel: +90 212 444 33 31 (444 EFF1) Fax: +90 212 674 95 44
www.merkezmotor.com.tr / info@merkezmotor.com.tr

LOTUS
MAYBAM
SOLUTIONS

AC Motors



2015/03